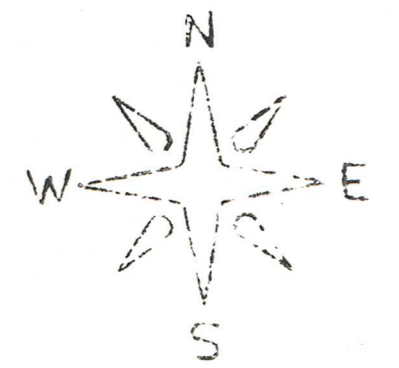
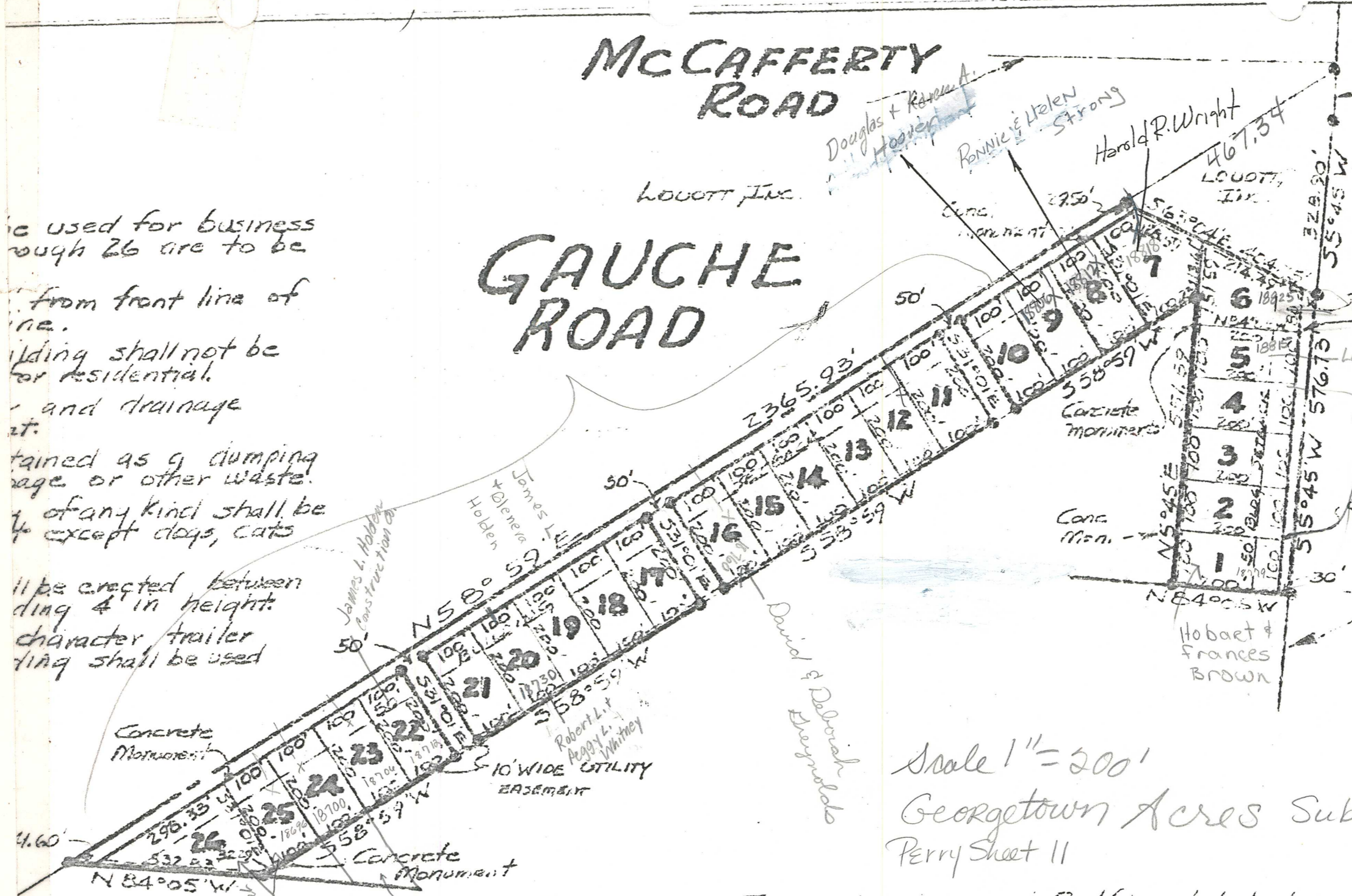


MCCAFFERTY ROAD

GAUCHE ROAD



to be used for business purposes
 rough 26 are to be
 from front line of
 ne.
 building shall not be
 for residential.
 and drainage
 at.
 tained as a dumping
 age or other waste.
 of any kind shall be
 except dogs, cats
 ll be erected between
 ding 4' in height.
 character trailer
 ding shall be used



U.S. ROUTE No. 68

Scale 1" = 200'
 Georgetown Acres Subd.
 Perry Sheet 11



I do hereby certify this plat to be a true delineation of an actual survey made by me and iron pins or concrete monuments have or will be set at all corners.
 July 21, 1972
 West Union, Ohio
Robert E. Sattiguid
 Surveyor No. 4238

Approved by the Brown County Engineer.
 July 24, 1972
William R. Ellis
 Brown County Engineer

Approved by the Board of Commissioners.
 July 24, 1972
Charles F. Meyer
 David E. P. D.

owners of the 14.270 acres
 196 in the Township of
 in the State of Ohio,
 transferred to said owners
 hereby certify that this
 and to be known as
 and the lots are
 (1) to twenty-six (26)
 lots and that part of
 road included within
 subject to the perpetual
 laws in such cases made

Perry 11